

# The Wolfson

## Foundation

---

6 November 2024

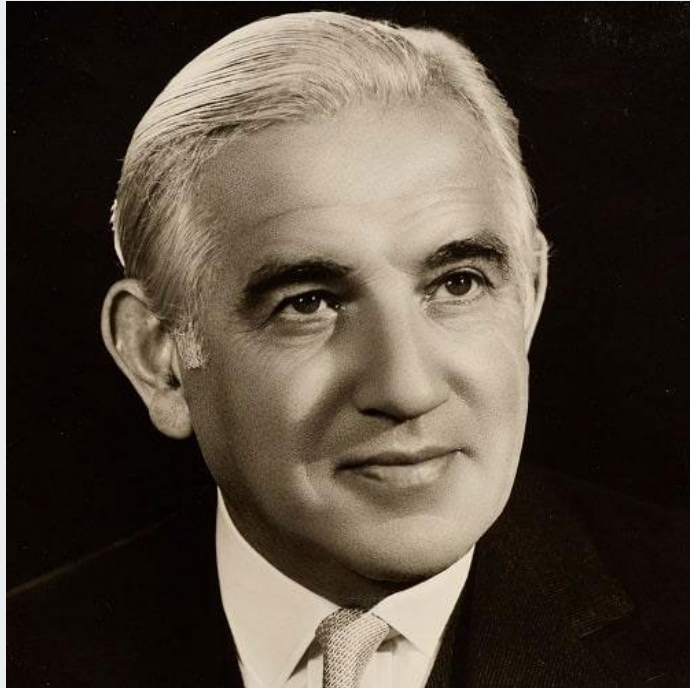
# Introduction to Health & Disability Funding

Eleanor Hodges, Senior Programme Officer  
(Science & Health)

## Aims for today

- Give a brief overview of the Foundation and our funding for health and disability organisations
- Help you decide if we are the right funder for you
- Some tips on what makes a strong Stage 1 application
- Outline the different stages in the application cycle
- Answer your questions
- Useful resources

## Wolfson Foundation at a glance



- Founded in 1955
- Wide ranging areas of interest
- Permanent endowment
- Capital focused

## Who does what

- Trustees are a mix of family members and expert advisors
- Administered by staff team of 12
- Two grant cycles per year, with a two-stage process
- Decisions informed by financial review (internal) and expert review (external)

Science & Medicine

Heritage, Humanities & the  
Arts

Secondary Education

Health & Disability



Disability and / or mental health	<ul style="list-style-type: none"><li>• projects which enable independent living</li><li>• support the transition from child to adult services</li></ul>
Older people	<ul style="list-style-type: none"><li>• care and support services</li><li>• neurodegenerative conditions or isolation</li></ul>
Hospices and palliative care	<ul style="list-style-type: none"><li>• excellent care to patients and their families</li></ul>



### Capital projects

- new build
- renovation/extension
- equipment

### Aims

- increased access
- improved quality and range
- improved future sustainability

**Stage 1 open**  
**Stage 1 deadline**  
**Stage 2 deadline**  
**Advisory Panel**  
**Board**

## Timeline

### Round 1

mid-November  
5 January  
1 March  
May  
June

### Round 2

mid-May  
1 July  
1 September  
November  
December

## Costings

Minimum grant amount:

£25,000

Usual grant range:

£40,000 - £75,000

Match funding requirements:

*Total project cost £50,000-£80,0000*

Some match funding required

*Total project cost above £80,000*

25%

## What makes a strong Stage 1

- Expertise/track record of the organisation
- Clearly address the programme aims
- Transformative potential of the project
- Regulatory compliance
- Timetable
- Clear need for external funding
- For larger projects, clear fundraising plans

## What happens during assessment

- Organisational and project eligibility
- Financial review
- Weighting applied to ensure that we take forward a balanced portfolio of projects
- If not taken forward, we will try to give you clear feedback about why, and about whether you should apply again

## Stage 2

- Longer proposal format, additional documents required
- Financial review will be updated
- External review sought from, e.g. local commissioners/NHS/CVS
- Applications go to Advisory Panel in May/Nov, and their recommendation goes to Board the following month
- Notification in Jun/Dec

## Post-award

- Two years in which to draw down payment
- Progress updates in April and October
- Final report within 12 months of project completion



# Resources

Eligibility quiz: <https://www.wolfson.org.uk/funding/eligibility-quiz/>

Sub stream eligibility criteria: <https://www.wolfson.org.uk/funding/funding-for-places/>

Funding FAQ page: <https://www.wolfson.org.uk/funding/funding-faqs/>

Tips for a Stage 1 application: <https://www.wolfson.org.uk/tips-for-a-stage-one-application/>

Stage 1 application questions:

<https://www.wolfson.org.uk/funding/application-guidance/stage-1-online-application-questions/>

Case studies from successful applicants: <https://www.wolfson.org.uk/funding/case-studies/>

Interactive maps of grants: <https://www.wolfson.org.uk/funding/what-weve-funded/>

Grant enquiries: [grants@wolfson.org.uk](mailto:grants@wolfson.org.uk)





# Questions